

### IMPORTANT INFORMATION

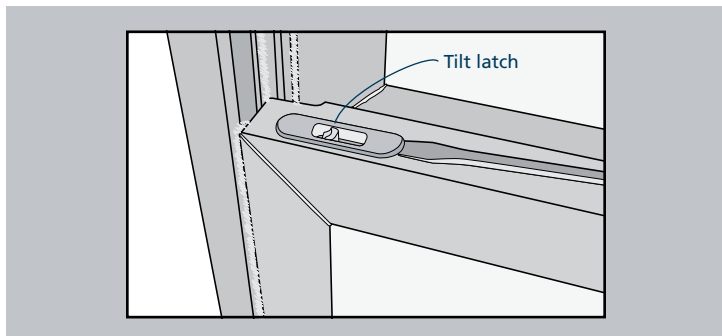
**Note!** Please visit [www.jeld-wen.com](http://www.jeld-wen.com) for additional resources and complete instructions. We have How-To videos and written Product Guides available for most products. Contact us for more information.

#### INCLUDED PARTS

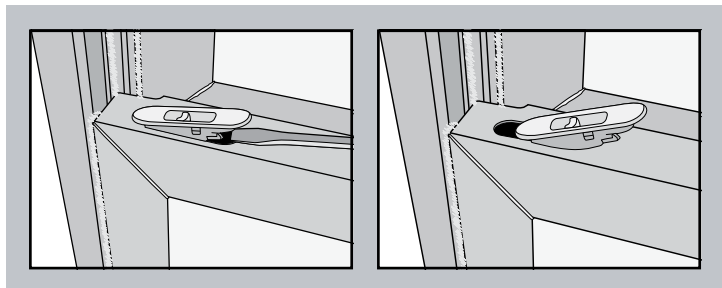
- (2) Tilt latches

### TILT LATCH REPLACEMENT

1. Insert a flat head screwdriver or putty knife between the tilt latch and window as shown.



2. Gently pry the end up until it pops out of the sash.
3. Pull the tilt latch away from the side and pull out of the hole in the sash.



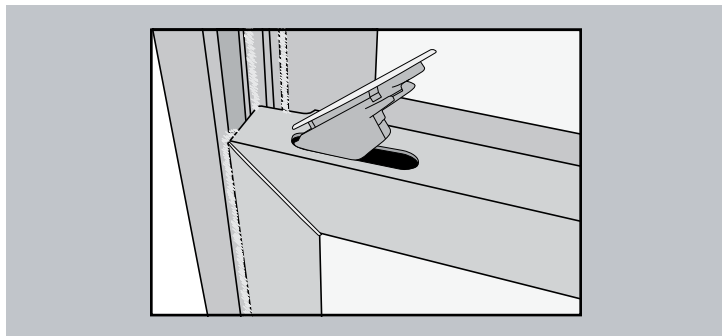
#### PRECAUTIONS AND SAFETY

- Use proper and safe equipment and protective gear as necessary.

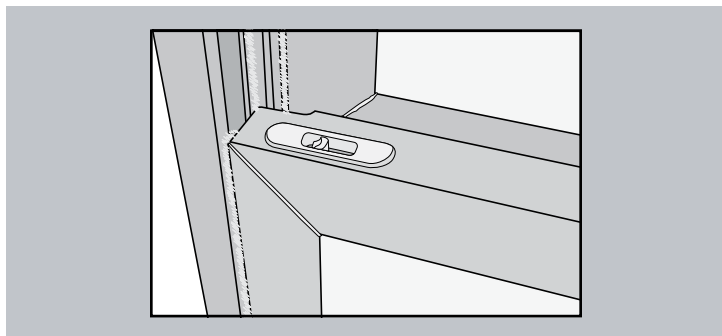
#### NEEDED TOOLS

- Flat head screwdriver or putty knife

4. At an angle, insert the replacement tilt latch into the hole in the sash.



5. When fully inserted, press the tilt latch down until it snaps into place and is flush with the sash.



The advice offered herein can be done by a homeowner with some mechanical aptitude. If you are unsure, it is recommended that you hire a trained service provider such as a competent and licensed construction contractor or building professional. JELD-WEN disclaims any and all liability associated with the use and/or provision of these instructions. Any reliance upon the information or advice is at the risk of the party so relying. The information contained herein may be changed from time to time without notification.