

IMPORTANT INFORMATION

Note! Please visit www.jeld-wen.com for additional resources and complete instructions. We have How-To videos and written Product Guides available for most products. Contact us for more information.

INCLUDED PARTS

- (2) Balances

PRECAUTIONS AND SAFETY

- Use proper and safe equipment and protective gear as necessary.
- Use caution when tightening screws to avoid stripping the screw holes.
- Sash removal can be awkward and could cause physical injury or product damage; we recommend the help of a second person.

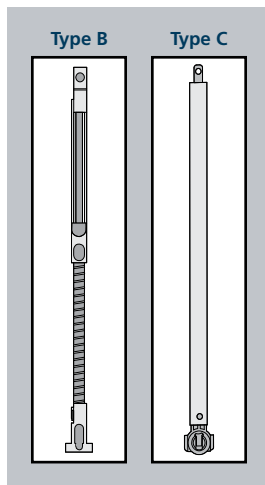
NEEDED TOOLS

- Flat head screwdriver
- Pliers
- Phillips head screwdriver
- Pencil

TILT BALANCE REPLACEMENT

REMOVAL

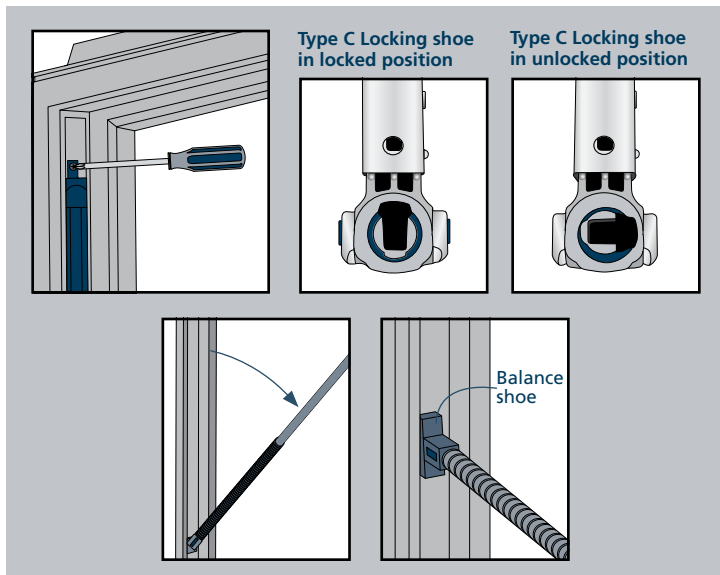
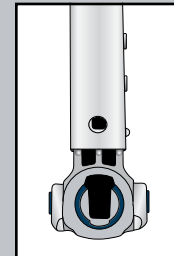
1. Remove sash. Remove channel covers, if applicable, and note position for re-installation. The balances are now exposed in side jambs. **See the Product Guide on www.jeld-wen.com for complete instructions on sash removal.**
2. Locate screw (or hook) at top. The balance is under tension, so remove carefully. Hold the end with pliers and either remove the screw or unhook the hook. Slowly allow the tension to release.
3. Type C balances, on the bottom, have a locking balance shoe. Turn the locking balance shoe 90° to a horizontal position with a flat head screwdriver to unlock it.
4. Take note of each balance's position in each side jamb and then tilt out from top. Mark with pencil if desired.
5. Twist until the balance shoe clears track and remove.



INSTALLATION

1. With balance horizontal, insert balance shoe into track in side jamb in the same position they were removed from. Twist to lock in place.
2. Tilt top end of the balance up into track.
3. On the bottom of type C balances, turn the locking balance shoe 90° to a vertical position with a flat head screwdriver to lock it.
4. Align metal screw tab at top of balance to screw hole in side jamb; insert and tighten screw, or, re-attach hook into hole.
5. Reinstall any channel covers, if applicable, and then the sash.
6. If the sash does not move freely in the window frame, the balance system may not be installed correctly or the pivot pins on the sash may not be properly engaged. Remove and reinstall the sash and/or balances again and take care to engage the pivot pins on both sides.

Type C Locking Shoe in Locked Position



The advice offered herein can be done by a homeowner with some mechanical aptitude. If you are unsure, it is recommended that you hire a trained service provider such as a competent and licensed construction contractor or building professional. JELD-WEN disclaims any and all liability associated with the use and/or provision of these instructions. Any reliance upon the information or advice is at the risk of the party so relying. The information contained herein may be changed from time to time without notification.