

IMPORTANT INFORMATION

Note! Please visit www.jeld-wen.com for additional resources and complete instructions. We have How-To videos and written Product Guides available for most products. Contact us for more information.

INCLUDED PARTS

- (2) Take out clips

PRECAUTIONS AND SAFETY

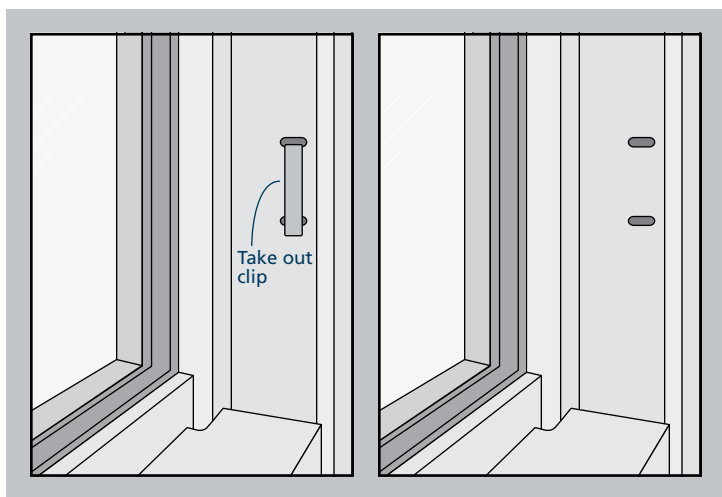
- Use proper and safe equipment and protective gear as necessary.

NEEDED TOOLS

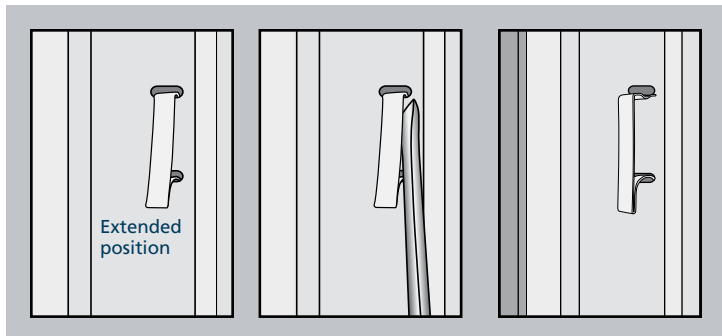
- Flat head screwdriver

SIDE LOAD TAKE OUT CLIP REPLACEMENT

1. Locate the old take out clip in the side jamb. If missing, look for the open slots and skip to the new clip installation.
2. Pry the bottom of the clip into the extended position.

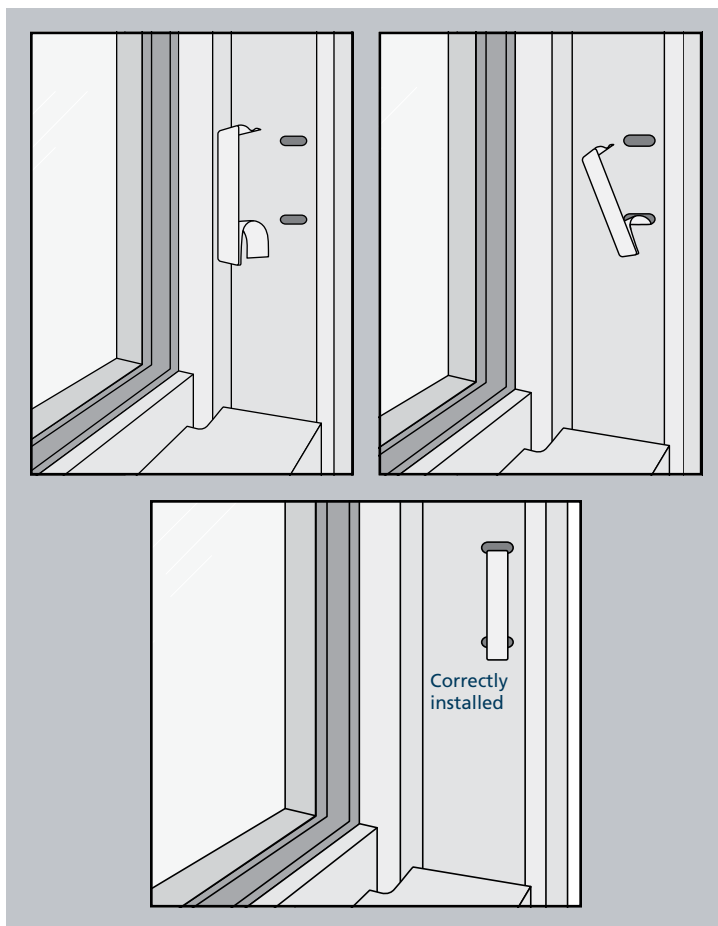


3. Using a flat head screwdriver, pry the top of the clip from the slot until it pops out. Remove the clip from the bottom slot.



NEW CLIP INSTALLATION

1. Position the new clip in the orientation shown.
2. Place the rounded end in the bottom slot and then push the top into the top slot until fully seated in the side jamb.



The advice offered herein can be done by a homeowner with some mechanical aptitude. If you are unsure, it is recommended that you hire a trained service provider such as a competent and licensed construction contractor or building professional. JELD-WEN disclaims any and all liability associated with the use and/or provision of these instructions. Any reliance upon the information or advice is at the risk of the party so relying. The information contained herein may be changed from time to time without notification.