



### IMPORTANT INFORMATION

**Note!** Please visit [www.jeld-wen.com](http://www.jeld-wen.com) for additional resources and complete instructions. We have How-To videos and written Product Guides available for most products. Contact us for more information.

#### INCLUDED PARTS

- Two (2) Tilt pins
- Two (2) screws

#### PRECAUTIONS AND SAFETY

- Use proper and safe equipment and protective gear as necessary.

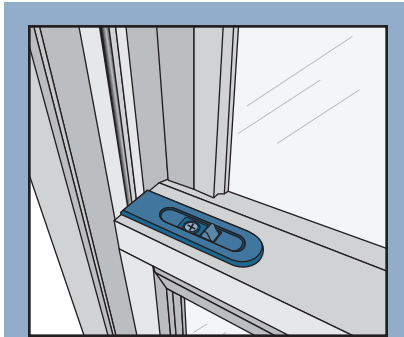
#### NEEDED TOOLS

- Phillips head screwdriver

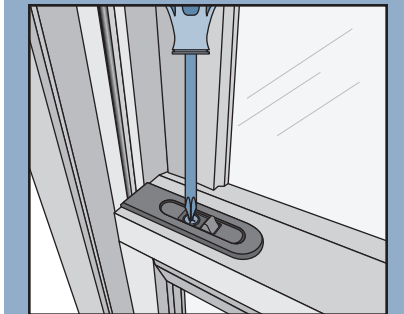
### DOUBLE-HUNG LOWER SASH TILT PIN REPLACEMENT

**Note!** Remove one pin at a time. There is no need to remove the sash for replacement.

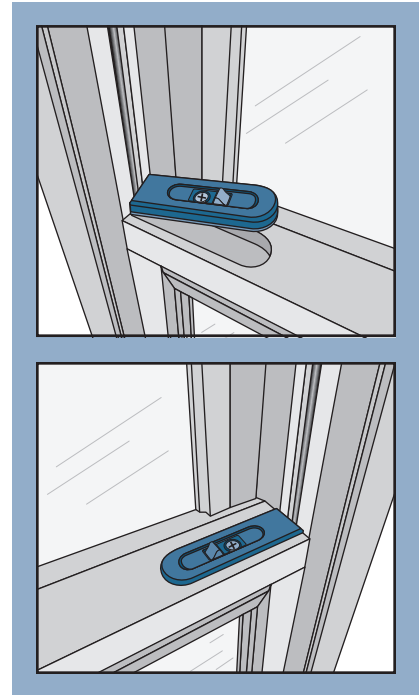
1. Move the pin to the retracted and locked position to gain access to the attachment screw.



2. Remove the screw with a phillips screwdriver.



3. Pull the pin up and out of the slot to remove.
4. Insert the new pin in the same orientation and lock the pin in the retracted position. Secure with the provided screw.
5. Repeat the process for the other side.



The advice offered herein can be done by a homeowner with some mechanical aptitude. If you are unsure, it is recommended that you hire a trained service provider such as a competent and licensed construction contractor or building professional. JELD-WEN disclaims any and all liability associated with the use and/or provision of these instructions. Any reliance upon the information or advice is at the risk of the party so relying. The information contained herein may be changed from time to time without notification.