



IMPORTANT INFORMATION

Note! Please visit www.jeld-wen.com for additional resources and complete instructions. We have How-To videos and written Product Guides available for most products. Contact us for more information.

INCLUDED PARTS

- Two (2) Tilt latches
- Four (4) screws - 2 long and 2 short screws

PRECAUTIONS AND SAFETY

- Use proper and safe equipment and protective gear as necessary.

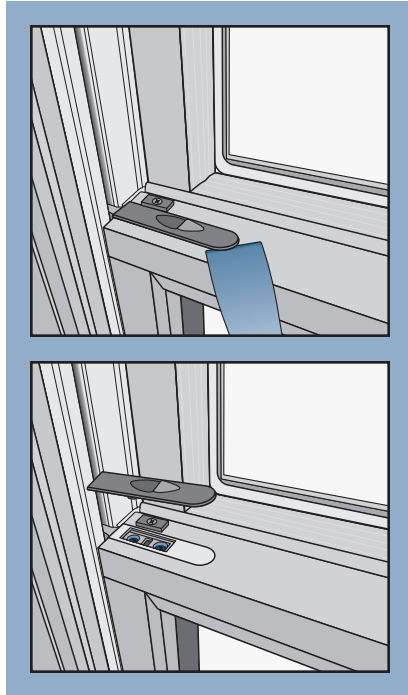
NEEDED TOOLS

- Phillips head screwdriver
- Putty knife

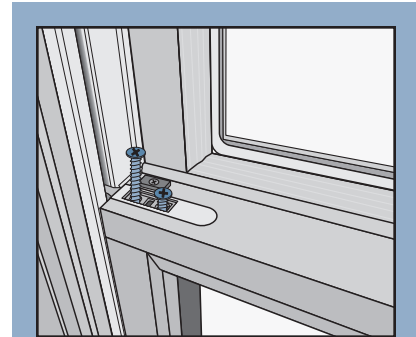
LOWER SASH TILT LATCHES REPLACEMENT

Note! Remove one pin at a time. There is no need to remove the sash for replacement.

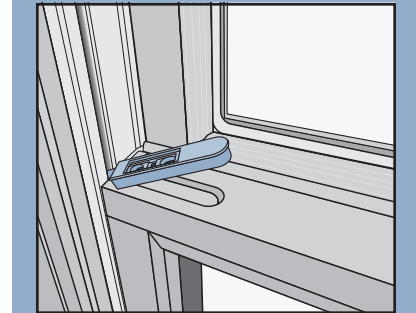
1. Gently pry under the cover to lift it off and gain access to the attachment screws.



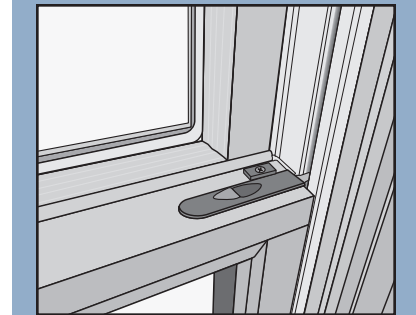
2. Remove the screws with a phillips screwdriver. Note that the screw closest to the jamb liner is longer than the other.



3. Pull the latch up and out of the slot to remove.
4. Insert the new latch in the same orientation. Secure with the provided screws. Make sure the longer screw is in the hole nearest the jamb liner.



5. Repeat the process for the other side.



The advice offered herein can be done by a homeowner with some mechanical aptitude. If you are unsure, it is recommended that you hire a trained service provider such as a competent and licensed construction contractor or building professional. JELD-WEN disclaims any and all liability associated with the use and/or provision of these instructions. Any reliance upon the information or advice is at the risk of the party so relying. The information contained herein may be changed from time to time without notification.