



IMPORTANT INFORMATION

Note! Please visit www.jeld-wen.com for additional resources and complete instructions. We have How-To videos and written Product Guides available for most products. Contact us for more information.

INCLUDED PARTS FOR HINGE REPLACEMENT

- Hinge
- Attachment screws

PRECAUTIONS AND SAFETY

- Use proper and safe equipment and protective gear as necessary.

NEEDED TOOLS

Hinge Replacement Tools:

- Phillips head screwdriver

Hinge Adjustment Tools:

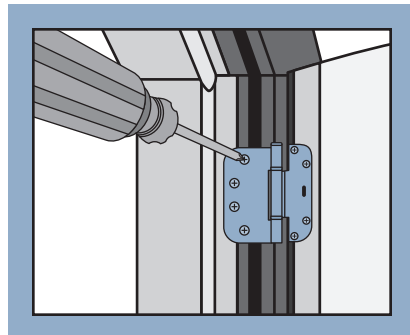
- Allen wrench
- Wood block
- Pry bar

SWINGING PATIO DOOR HINGE REPLACEMENT AND ADJUSTMENTS

HINGE REPLACEMENT:

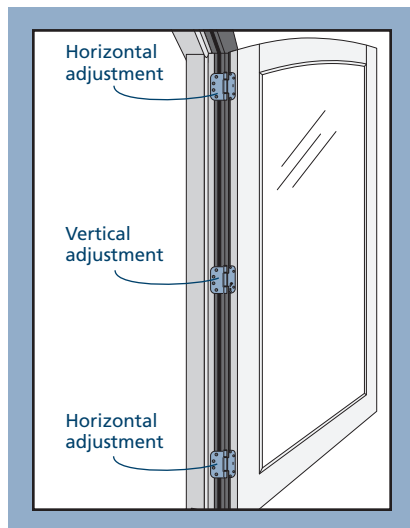
Note! Replace one hinge at a time or remove the panel for easier access.

1. Open the door and remove the screws with a phillips screwdriver from both leaves and remove.
2. Install a like hinge in the same location and secure with the provided screws.
3. Adjust the new hinges as necessary. See our separate document for details.



HINGE ADJUSTMENTS:

1. The top and bottom hinges adjust horizontally. The middle hinge(s) adjust vertically. If the door has two middle hinges, only one will be adjustable.



2. To adjust the top and bottom hinges, insert a 3/32" allen wrench into the adjustment nut and turn clockwise to move the panel away from the jamb and counterclockwise to move it toward the jamb.

3. Before adjusting the vertical height of the door, lift the weight off of the panel, being careful to not damage the sweep on the bottom of the door.

4. To adjust vertically, insert a 3/32" allen wrench into the adjustment nut and turn clockwise to move the panel up and counterclockwise to move it down.

