

IMPORTANT INFORMATION

Note! Please visit www.jeld-wen.com for additional resources and complete instructions. We have How-To videos and written Product Guides available for most products. Contact us for more information.

INCLUDED PARTS

Sideload

- Vent stops (6)

Tilt and Double-Hung

- Vent stops (6)

PRECAUTIONS AND SAFETY

- Use proper and safe equipment and protective gear as necessary.

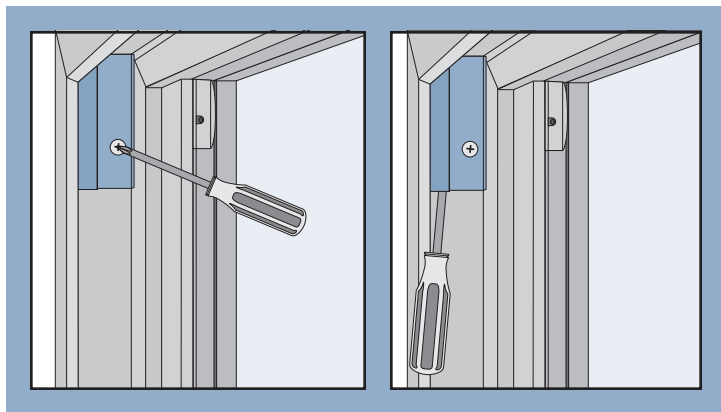
NEEDED TOOLS

- Phillips screwdriver

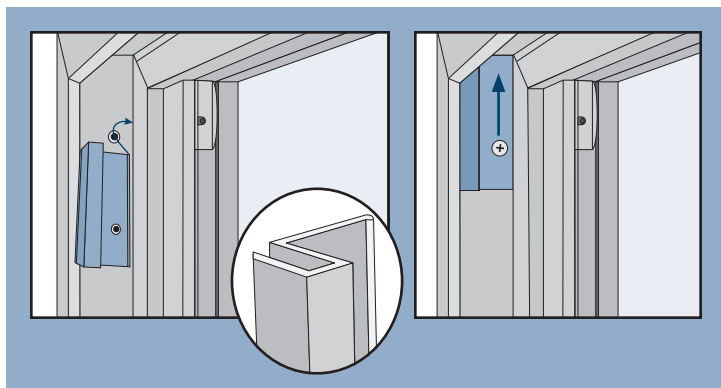
VENT STOP REPLACEMENT

Sideload:

1. Remove screw securing vent stop if your window has them existing.
2. Insert screwdriver in cavity of vent stop and pry up to release.

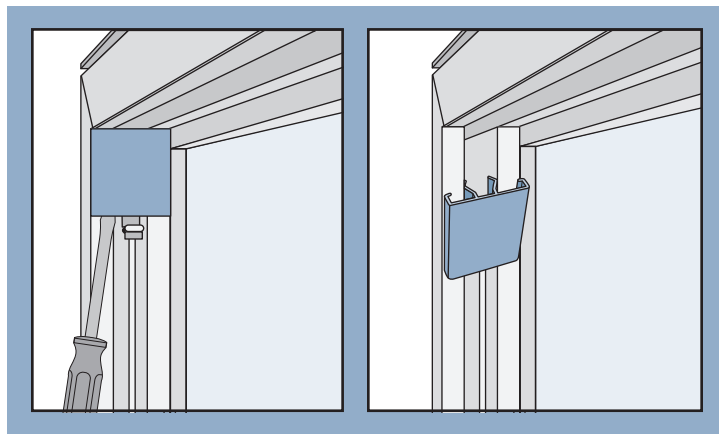


3. Install new vent stop by inserting the flat side to the exterior under the lip and snap the interior side to secure.
4. If needed lift sash to move the stop into place.
5. If applicable, reinstall screw through new vent stop.

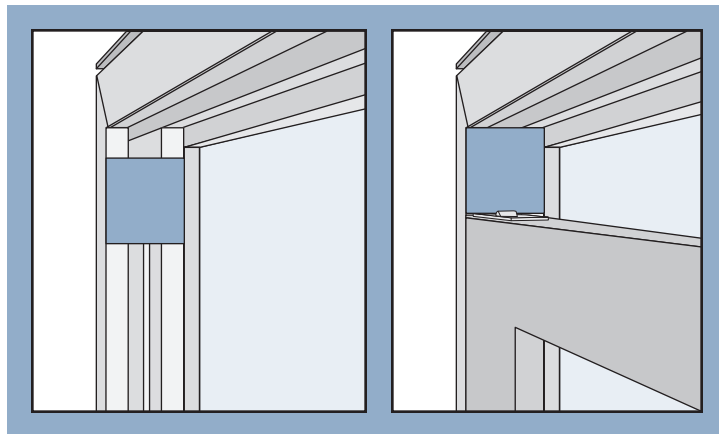


Tilt and Double-Hung:

1. Insert screwdriver in cavity of vent stop and pry up to release.
2. Install new vent stop by inserting the long leg side to the exterior and press to exterior until the interior leg snaps into the frame.



3. If needed lift sash to move the stop into place.



The advice offered herein can be done by a homeowner with some mechanical aptitude. If you are unsure, it is recommended that you hire a trained service provider such as a competent and licensed construction contractor or building professional. JELD-WEN disclaims any and all liability associated with the use and/or provision of these instructions. Any reliance upon the information or advice is at the risk of the party so relying. The information contained herein may be changed from time to time without notification.