

IMPORTANT INFORMATION

Note! Please visit www.jeld-wen.com for additional resources and complete instructions. We have How-To videos and written Product Guides available for most products. Contact us for more information.

INCLUDED PARTS

- Operator
- Contour handle and cover
- Operator screws (6)

PRECAUTIONS AND SAFETY

- Use proper and safe equipment and protective gear as necessary.

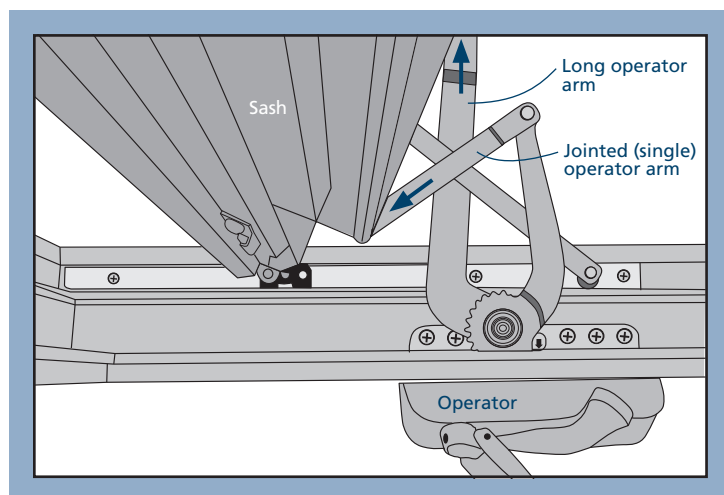
NEEDED TOOLS

- Phillips head screwdriver
- Flat head screwdriver

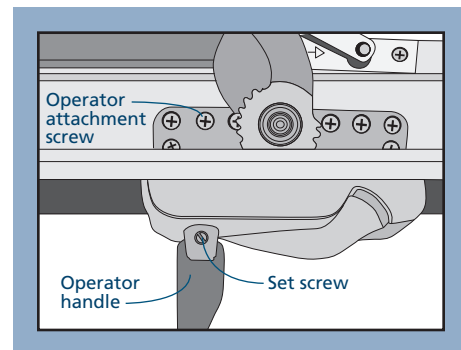
CASEMENT OPERATOR REPLACEMENT

OPERATOR REPLACEMENT - REMOVE HANDLE FOR ALL WINDOWS

1. Remove insect screen from window if present.
2. Open the window halfway.
3. Disconnect the jointed operator arm by sliding the retaining clip back (if applicable) before depressing between the arm and stud it is seated on.
4. Disconnect the long arm by depressing the arm out of the black plastic slide under the sash.



5. Remove visible operator screws and move arms to remove the rest for a total of six (6).
6. Move the arms to a position where the operator can carefully be pulled to the interior. Use caution to avoid any damage if a gasket is present.
7. Insert the new operator and fasten the operator screws (6) being careful to not over tighten.
8. Install the cover by placing the top to the frame and pressing down to secure.
9. Place the handle on the operator and move arms and or sash into place where the arms can be reattached.
10. Snap the jointed arm back onto the stud of the sash bracket and if present slide retaining clip back into the locked position.
11. Pull the sash until it is positioned above the long arm.
12. Position the black slide above the stud on the long arm and press together until they snap secure.
13. Close the window and position the handle in a manner that will allow it to nest in the cover.
14. Secure the set screw in the handle.
15. Reinstall insect screen if applicable.



The advice offered herein can be done by a homeowner with some mechanical aptitude. If you are unsure, it is recommended that you hire a trained service provider such as a competent and licensed construction contractor or building professional. JELD-WEN disclaims any and all liability associated with the use and/or provision of these instructions. Any reliance upon the information or advice is at the risk of the party so relying. The information contained herein may be changed from time to time without notification.